

Model 3614 RS TELEHANDLER

JLG®

STAGE III B
COMPLIANT



Performance

| | |
|-------------------------------------|----------------|
| Rated Capacity | 3600 kg |
| Maximum Lift Height | 14 m |
| Load at Max Height | 3000 kg |
| Load at Max Reach | 150 kg |
| Frame Leveling | 10° |
| Lift Speed (boom retracted) | |
| Up | 14 sec |
| Down | 12 sec |
| Boom Speed (extended/retracted) | |
| Extended | 17.5 sec |
| Retracted | 14.0 sec |
| Top Travel Speed | 25 km/h |
| Max. crowd | 3.5 sec |
| Max. dump | 2.5 sec |
| Engine: | 74.4kW 3 speed |
| Breakout force | 75 kN |
| Outside Turning Radius (over tyres) | 3.85 m |
| Operating Weight | 9800 kg |

Standard Specifications

Engine

| | |
|-----------------------------|------------------|
| Make and Model | Deutz TCD 3.6 L4 |
| No. of Cylinders | 4 |
| Displacement | 3.6 L |
| Standard engine gross power | 74.4kW |
| Maximum torque at 1600 RPM | 420Nm |
| Fuel Tank Capacity | 150 L |

Transmission

- 3 speed forward and reverse. (1st: 5 km/h, 2nd: 12 km/h, 3rd: 25 km/h)

Axles

- Trunnion mounted planetary steer axles
- High bias limited slip differential on front axle
- Integral steer cylinder

Brakes

- Service brakes are inboard, wet disc brakes on front and rear axle
- Internal wet disk on front axle
- Service brakes servo assisted

Tyres

| | |
|------------|---|
| • Standard | Mitas 15.5/80-24 16ply |
| • Optional | Goodyear 15.5-25 SGL Michelin 400/80-24 Power CL |

Cab

- EROPS and FOPS fully glazed all weather cab
- 2 way adjustable mechanical suspension seat

Steering 4-Wheel

- Power steering with steering wheel spinner
- Two wheel/four wheel/crab steer with push button select facility

Instruments

- Engine oil pressure gauge
- Fuel gauge
- Hour meter
- Maintenance indicator
- Water temperature gauge
- Right-hand tilt and sway lever
- Boom lift and crowd on single joystick

Hydraulic System-Implement

| | |
|----------|-------|
| Capacity | 100 L |
|----------|-------|

- Pump type: Gear pump
- Maximum pump flow 100 L/min
- Auxiliary hydraulic flow - intermittent 100 L/min

Accessories & Options

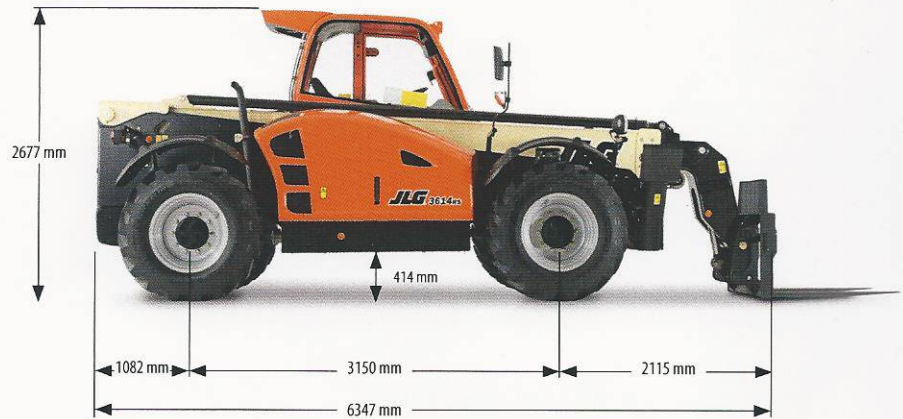
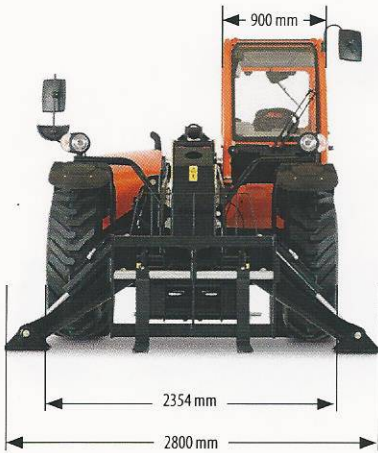
- Air conditioning (optional)
- Frame leveling
- Road lights
- Rear retrieval hitch (optional)
- Brick guards (optional)
- Stabilisers
- Rotating beacon (optional)
- Load stability indicator (LSI)
- Work lights (cab only)

Attachments

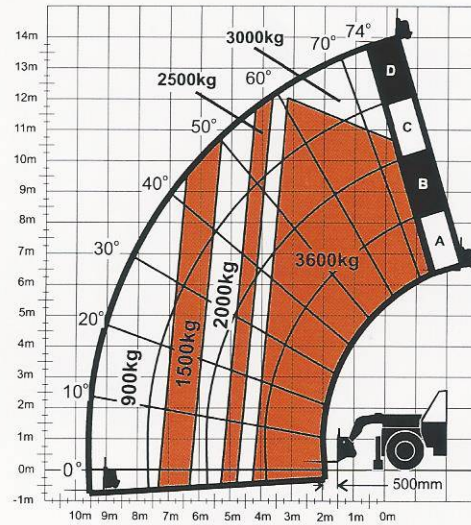
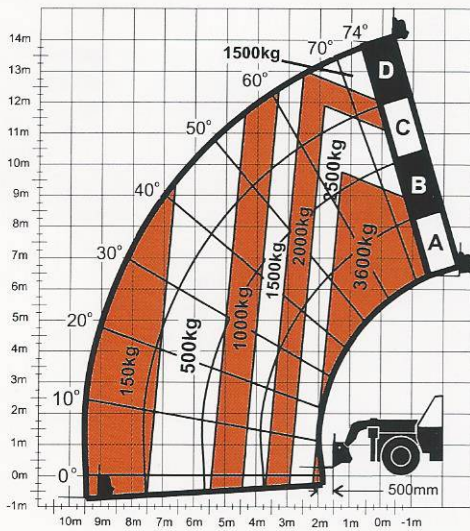
| | |
|-----------------------|-----------------------------|
| Standard: | |
| Standard carriage | 4000 kg |
| Standard coupler | Mechanical coupler |
| Pallet fork (4000 kg) | 1200 mm x 60 mm x 100 mm |
| Optional: | |
| Couplers | Manual coupler JCB, Manitou |
| 4-1 Bucket | 2.4 m, 1.0 m ³ |
| Light material bucket | 2.45m, 1.8m ³ |
| Lifting Hook | 4000 kg |
| Truss Boom | 3.4 m, 1000 kg |

Model 3614 RS TELEHANDLER

Dimensions



Load Chart and Dimensions



IMPORTANT

All dimensions are approximate. Rated lift capacities shown are with machine equipped with carriage and pallet forks. The machine must be level on a firm surface with undamaged, properly inflated tires. Machine specifications and stability are based on rated lift capacities at specific boom angles and boom lengths. (If specifications are critical, the proposed application should be discussed with your dealer.) DO NOT exceed rated lift capacity loads, as unstable and dangerous machine conditions will result. DO NOT tip the machine forward to determine the allowable load.

Use only JLG approved attachments with proper material handler model/attachment load capacity charts displayed in the operator's cab.

Due to continuous product improvements, JLG Industries reserves the right to make specification and/or equipment changes without prior notification.



JLG Industries, Inc.

Polaris Avenue 63
2132 JH Hoofddorp
The Netherlands
Tel: +31 (0)23 565 5665
Fax: +31 (0)23 557 3750
www.jlgeurope.com

An Oshkosh Corporation Company