

Model

600 Series

ARTICULATING BOOM LIFTS



Features

6 ft (1.83 m) Articulating Jib (600AJ only)
Platform:
36 x 96 in. (0.91 x 2.44 m) side entry
Inward Self-Closing Swing Gate
Oscillating Axle
180 Degree Hydraulic Platform Rotator
110V-AC Receptacle in the Platform
5 Degree Tilt Alarm/Indicator Light
Swing-Out Engine Tray
12V-DC Auxiliary Power
Hourmeter
Horn
Control ADE® System
Proportional Controls
Gull-Wing Engine Hood
Operator Tool Tray
Platform Console Machine
Status Light Panel*
Lifting/Tie Down Lugs
14 x 17.5 Rim Protector Lug Tread Tires
All Motion Alarm
Glow Plugs (Diesel Engines)

* Provides indicator lights at platform control console for system distress, 5 degree tilt light, and foot switch status.

Accessories & Options

Platform: 36 x 72 in. (0.91 x 1.83 m)
Fall Arrest Platform, Rear Entry¹:
36 x 96 in. (0.91 x 2.44 m)
Mesh to Top Rail — Bolt-on Aluminum
Soft Touch System
Foam-Filled Tires
43.5 lb (19.7 kg) Propane Tank
Exhaust Purifier Muffler (Diesel)
Cold Weather Start Kit²
Hostile Environment Kit³
Light Package⁴
Platform Worklights
Flashing Amber Beacon
Arctic Package⁵

Accessory Packages:

SkyPower®
SkyWelder®
SkyGlazier®
SkyCutter®
Pipe Rack

1. Foam-filled tires required.

2. Includes engine block heater (CAT) or glow plugs (Diesel), battery heater, oil tank heater.

3. Includes console cover, boom wipers and cylinder bellows.

4. Includes head and tail lights, and platform worklights.

5. Includes arctic hydraulic hoses (drive and steer only) and main boom cable, arctic hydraulic oil, extreme cold engine oil, anti-freeze (CAT only), fuel conditioner, engine block heater, battery blanket, glow plugs, hydraulic tank heater, and oversized footswitch.



Extra Reach and High Capacity

- The industry's best reach envelope — 26 ft 7 in. (8.1 m) up and over height and up to 39 ft 9 in. (12.12 m) horizontal outreach
- Up to 1,000 lb (454 kg) platform capacity

More Versatility

- 7 ft (2.13 m) wide narrow chassis models go where wider competitive machines can't
- Articulating jib models to access hard to reach areas
- Standard oscillating axle and optional 4-wheel drive deliver outstanding drive performance
- Optional 4-wheel steer provides unmatched maneuverability in confined areas
- Exclusive Workstation in the Sky® options and accessories

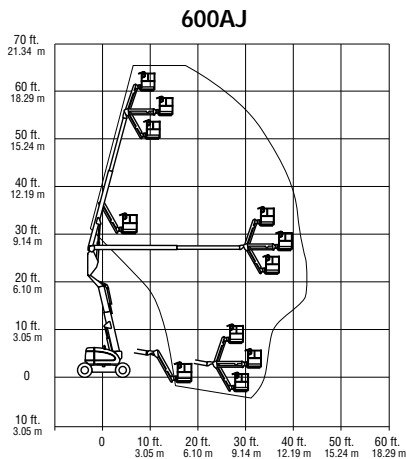
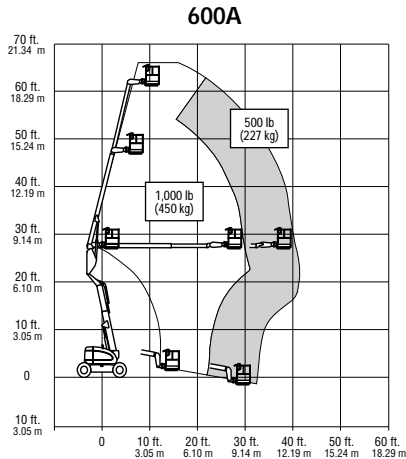
Easier Maintenance, Reduced Costs

- Swing-out engine tray allows for faster and easier access for routine maintenance
- Exclusive Advanced Design Electronics (Control ADE®) System provides smoother machine functions, increased fuel efficiency and reduced emissions

Model 600 Series

ARTICULATING BOOM LIFTS

Specifications



Reach

Platform Height	
600A	60 ft 5 in. (18.42 m)
600AJ	60 ft 7 in. (18.47 m)
Horizontal Outreach	
600A	39 ft 7 in. (12.07 m)
600AJ	39 ft 9 in. (12.10 m)
Up and Over Clearance	26 ft 7 in. (8.1 m)
Swing	360 Degrees Continuous
Platform Capacity—Restricted	
600A	1,000 lb (450 kg)
600AJ	500 lb (227 kg)
Platform Capacity—Unrestricted	
600A	500 lb (227 kg)
Platform Rotator	180 Degrees Hydraulic
Jib (Range of Articulation)	
600AJ	130 Degrees (+70, -60)

Dimensions

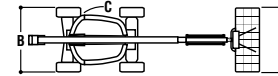
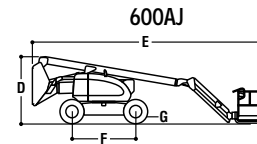
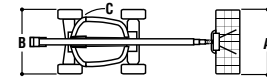
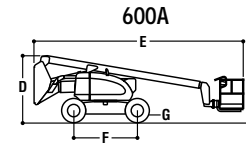
A. Platform Size	36 x 96 in. (0.91 x 2.44 m)
B. Overall Width	8 ft. (2.44 m)
Narrow Models	7 ft (2.13 m)
C. Tailswing (working condition)	Zero
Narrow Models	5 in. (13 cm)
D. Stowed Height	8 ft 4 in. (2.54 m)
E. Stowed Length	
600A	26 ft 5 in. (8.05 m)
600AJ	28 ft 11.5 in. (8.83 m)
F. Wheelbase	8 ft (2.44 m)
G. Ground Clearance	8 in. (20 cm)
Weight	
600A	22,150 lb (10,047 kg)
600A Narrow	24,100 lb (10,931 kg)
600AJ	23,050 lb (10,455 kg)
600AJ Narrow	24,200 lb (10,977 kg)
Max. Ground Bearing Pressure	
600A	77 psi (5.5 kg/cm ²)
600A Narrow	94 psi (6.6 kg/cm ²)
600AJ	75 psi (5.27 kg/cm ²)
600AJ Narrow	94 psi (6.6 kg/cm ²)

Chassis

Drive Speed 2WD	4.25 mph (6.8 kph)
Drive Speed 4WD	4.25 mph (6.8 kph)
Gradeability 2WD	30%
Gradeability 4WD	45%
Tires	14 x 17.5 Lug Tread
Narrow Models	14 x 17.5 Air Boss
Axle Oscillation	8 in. (20.4 cm)
Turning Radius (Inside/Outside)	
2WS	11 ft. 5 in. (3.48 m)/17 ft. 8 in. (5.38 m)
4WS	5 ft. 6 in. (1.68 m)/11 ft. 8 in. (3.56 m)
Narrow Models	
4WS	5 ft. 7 in. (1.7 m)/11 ft. 2 in. (3.4 m)

Power Source

Dual Fuel Engine	
GM Vortec 3000 MPFI	82 hp (61 kw)
Diesel Engine	
Deutz D2011L04	49 hp (36.5 kw)
Caterpillar 3044C	63.3 hp (47.2 kw)
Fuel Tank Capacity	30 gal. (113.6 L)
Hydraulic Reservoir	30.6 gal. (115.8 L)
Auxiliary Power	12V DC



The JLG "1 & 5" Warranty

JLG Industries, Inc. backs our products with our exclusive "1 & 5" Warranty. We provide coverage for one (1) full year, and cover all specified major structural components for five (5) years. These machines meet or exceed applicable OSHA Regulations in 29 CFR 1910.67, 29 CFR 1926.453, ANSI A92.5-2006 and CSA standard B354.4-02 as originally manufactured for intended applications. We reserve the right to make price, specification, and/or equipment changes without prior notification.



JLG Industries, Inc.

1 JLG Drive
McConnellsburg, PA 17233-9533
Telephone 717-485-5161
Toll-free in US 877-JLG-LIFT
Fax 717-485-6417

www.jlg.com

An Oshkosh Corporation Company