

Dingli Boom Lifts Product Manuals

 Electric  Engine

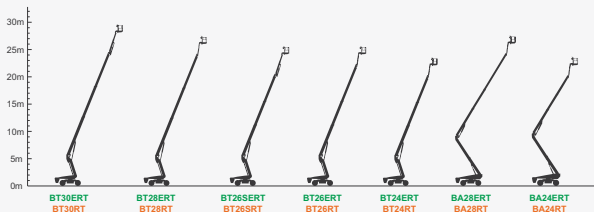


DINGLI[®]
Exceed · New Height



Dingli Self-propelled Boom Lifts Are Divided Into Telescopic Boom Lifts And Articulating Boom Lifts, With Two Types Driving Mode Of Electric Drive And Engine Drive. There Are 14 Models In The Whole Series, Including 10 Telescopic Boom Lifts And 4 Articulating Boom Lifts, With Working Heights Ranging From 24.3m To 30.3m. The Whole Series Is Jointly Developed By Dingli And Italian Research And Development(R&D) Center, With Completely Independent Intellectual Property Rights.

The Whole Series Of Boom Lifts' Counterweight And Center Of Gravity Move Down, Adopts The Whole Components To Move Down Design, Inherits The Family Modular Concept, Relies On The Performance Guarantees Of A Series Of High-end Configuration Such As American DANA Spicer Axle, Germany Bosch Rexroth High Pressure Driveline System And Danish Danfoss PVG Hydraulic Control System, Which Are The World's Leading Technology. They Have Many Advantages Such As Heavy Load, Strong Power, High Chassis, Easy Maintenance, Easy Transportation, Stable Control, Safer, High Energy Saving, Great Endurance Ability, More Environmentally Friendly, Etc., And Can Be Competent For All Kinds Of Complex And Severe Limit Working Conditions!



**Heavy Load**

The Whole Series Of Telescopic Boom Lifts Max. Load 454kg (Full Height Travel), Articulating Boom Lifts Max. Load 300kg (Full Height Travel), The Load Capacity Is Greater.

**Stable Control**

The Whole Series Adopt The Whole Component To Move Down Design, The Center Of Gravity Is Lowered, Cooperate With The Special Intelligent Control System, Making The Whole Machine More Stable, The Operation Is More Stable.

**High Chassis**

The Whole Series Is Equipped With Large Wheel Hub, Tire Diameter Of 108cm, Chassis Clearance Of 41cm, Compared With The Traditional Boom Lifts, Better Passability.

**Easy Transportation**

The Whole Series Not Only Can Be Transported By Basic Flatbed Truck, But Also Can Be Shipped In Regular Container (40HQ).

**Strong Power**

Equipped With A Special Axle For Aerial Working Platforms, It Can Meet The Requirements Of 4WD, And The Gradeability Is Up To 45% (Engine Type); Equipped With 100% Hydraulic Differential Lock System, Even If Three Wheels Slip, Start Differential Lock System Can Still Go Forward, Rough-terrain Performance Is Stronger.

**High Energy Saving**

The Engine Type Is Equipped With ECO Green Energy Saving System, Which Can Control Engine Speed Intelligently, Supply Oil On Demand, Heat Dissipation According To Temperature, And Save Energy.

**Great Endurance Ability**

The Electric Type Whole Series Is Equipped With 520Ah/80V High-capacity Lithium Battery, With Greater Endurance Ability.

**More environmentally friendly**

The Full Range Of Electric Models Are Equipped With Dedicated Electric Drive Axles, Using Batteries As The Power Source, With Low Noise, Zero Emissions, No Pollution, And More Environmentally Friendly.

**Easy Maintenance**

The Whole Series Adopts The Family Modular Design, 95% Main Components Are Common, More Than 80% Structural Parts Are Common. Only Need To Repair 1 Model, The Whole Series Of Models Are Covered; Only Need To Purchase 1 Set Of Components, The Whole Series Of Models Are All Universal. The Electric Model Is Equipped With A Five-year Warranty Without Maintenance Lithium Battery, Which Greatly Reduces The Cost Of Engine Maintenance And Diesel Addition.

**Safer**

The Whole Series Is Equipped With The Dual Sensing System, Intelligent Anti-extrusion System, Intelligent Safety Valve Protection System, Etc. Which Is More Secure. The Boom Uses Q960 Special Steel, The Safety Is Higher. The Maintenance-free Lithium Battery Of The Electric Type Is Equipped With BMS Battery Management System To Ensure The Equipment Electricity Safety.

**The Gradeability Up To 45%****Anti-extrusion Device**

Crab Row

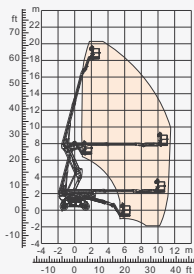
BigTurn

Multiple Steering Modes**100% Hydraulic Differential Lock System**
Three Wheels Slip, Can Still Go Forward**High-capacity Lithium Battery Pack**



Self-propelled Articulating Boom Lifts **(Electric Axle Types)**

The Maximum Working Height Is From 20.28 Meters To 22.21 Meters, And The Maximum Load Is 230kg. Equipped With A Special Axle For Aerial Working Platforms, And Adopting 4WD And 4WS. Stronger Off-road Capability. With The Advantages Of Noiseless, Long Endurance Ability, Easy Maintenance, Strong Power, Environmental Protection. In Addition To The Working Conditions Of The Engine Type, It Can Also Be Competent For Indoor Working Conditions Such As Residential Areas, Airports And Shopping Malls With Higher Environmental Requirements.



BA20ERT

Model	BA20ERT
Size	
Max. Working Height	20.28m
Max. Platform Height	18.28m
Max. Horizontal Reach	10.69m
Overall Length(Stowed) A	8.72m
Overall Width(Stowed) B	2.29m
Overall Height(Stowed) C	2.49m
Platform Size(Length×Width)	1.83m×0.79m
Turntable Tailswing	0.73m
Ground Clearance D	0.279m
Wheelbase E	2.4m
Turning Radius(Inside/Outside)	1.56m/2.57m
Tyres	315/55 D20
Up and Over Clearance	7.7m
Max. Down Probing Depth	1.263m
Performance	
Gradeability	30%
S.W.L	230kg
Max. Occupants	2
Travel Speed(Stowed)	6.1km/h
Travel Speed(Raised)	1.1km/h
Max.Working Slope	X-5°/Y-5°
Turret Rotation	360 °Continuous
Platform Rotation	+/-90°
Jib Movement	+70°/-60°
Weight	
Overall Weight	9590kg
Power	
Battery	24×2V/375Ah
Charger	48V/60A
Hydraulic Oil Tank	67L

