

**CUSTOMER:** Moto Engil  
**PROJECT NAME:** Central Square Apartments, Sandton  
**APPLICATION:** Application of Gama Zenith Coating

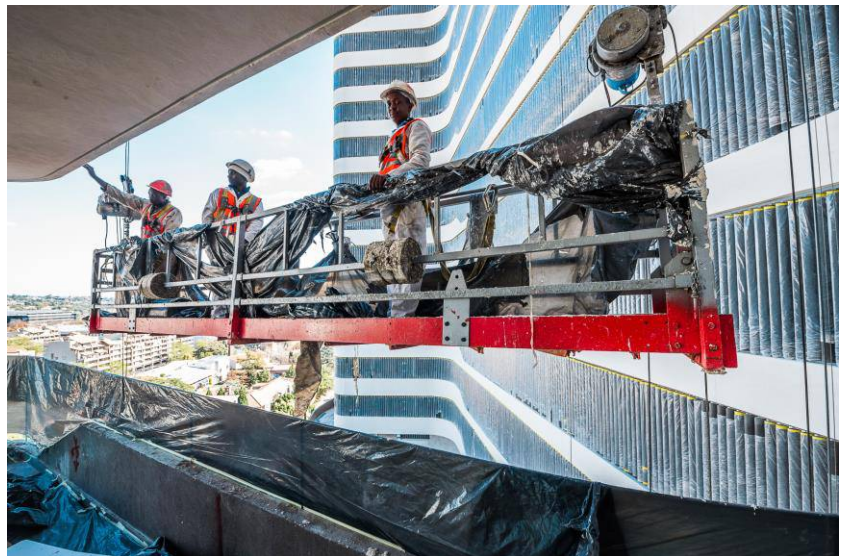
## PROJECT DESCRIPTION

SkyJacks was appointed by Moto Engil to install platforms on the Central Square Apartments in Sandton to give access to the coating application sub-contractor to apply Gamma Zenith to the external façade of the building.

The Contractor had limited time to complete the contract and the use of scaffolding was not only expensive option but couldn't be used as the ground floor had to be completed and handed over before the upper floors were finished. and The platforms were suspended from the building using a counterweight system and were used over a contract period of six months. Obstacles like pools, glass balustrades and newly tiled balconies had to be overcome by our site team who installed, inspected, moved and dismantled the platforms for the contractor.

At peak we had 21 platforms hanging.

Vertical Run	60 m
Type of Platform	Ranging from 1.5m to 6m standard platforms
Rated Load	360kg – 2-3 persons
Type of Hoist	2 x Alpha 800 9mm wire ropes
Standards	SANS 51808, SANS 10295-2, SANS 10162-1
Type of Suspension System	Counterweight



**SKY CLIMBER**  
ACCESS INNOVATIONS SINCE 1955